



Accessories

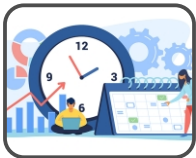


Turnstile Mounting Stand



SS Panel for Protection

Use Cases



Time and Attendance Management



Access Control System



Cloud based Attendance



Amenity Booking Management



Canteen Token Management

VF2000

AI based 7" Industrial grade (IP65 rated) Attendance & Access control Terminal with Mask, Temperature Logging\*

## Features



### High user capacity

- Standard 10,000 Face (1:N), upgradable to 25,000 Face (1:N, 50,000 Face)
- 1500 Palm User\* (Model : VF2000P)
- 2,00,000 user log storage



### Ultra fast and accurate face recognition

- Recognizes faces in less than 0.3 seconds
- Works from 0.1-30,000 Lux
- Highly accurate: more than 99% Accuracy
- Works from 0.3-2 meters



### Powerful internal chipset

- Extremely fast double core 1 GHz chipset
- EM Prox or MIFARE Reader or HID Reader\*
- 2 MP Dual Camera with 1080P/30fps
- EMMC FLASH 8Gbytes, 16GB TF storage
- 7 inch Touchscreen display



### Multi factor authentication

- Face only
- ID and PIN
- Card and face (if Card reader opted for)
- Card or face (if Card reader opted for)



### Multiple modes of connectivity

- LAN port with TCP/IP with Push Technology
- Built-in WiFi
- Built-in USB
- 4G interface with SIM card slot\*



### Access Control ready

- Wiegand output support
- 2 Relay output
- Exit button support input
- Door sensor support input

## Specification

Security Photo	2,00,000
Mask Detection	Yes
Attendance	Interval, Work Status, Work Code
Operating System	Linux 4.9
Communication	TCP/IP with Push Tech., MQTT, HTTP supports
Screen	Industry 7 inch Touch Screen
Sensor	2 MP Dual Camera with 1080P/30fps
Card Reader*	EM Proximity/MIFARE (Optional)
Work Environment	(-)10°C ~ (+)50°C, RH <95%
Access Control	26/34 bit Wiegand output
Certification	RoHS, FCC, CE
Application Area	Outdoor & Indoor
Printer Interface*	Thermal printer for Canteen module
Industrial Grade	Full Metal Body & shielded cable
Temp. Detection*	Range: 33°C~42°C, Accuracy: +/-0.3°C
IP Rating	IP65
Power	DC 12V 2A
Dimension	230*25*120 mm
Weight	0.85 Kg

### Communication Platform Software & API's

- **Smart Face** : Web Based Communication Server for Face & Finger Terminal, Template & Data Management with Push Technology
- **PM Neo** : API integration project with HRMS/Payroll/ERP software for Employee Master, Templates, Terminal & Transaction data

### Application Software

- **Smart Face Attendance** : Web based Platform Software with Built-in Attendance Management, Leave & OT Module
- **OTG HR** : Cloud based Attendance System(including Mobile App) with Intra-office Task Management Solution
- **TPP Nuo** : Desktop Based communication & MIS Software for Attendance with Push Technology upto 200 Users
- **MyGate** : Society Management App

### Ordering Information

- **VF 2000** : 7" Wall mounting Device
- **VF 2000P** : 7" Wall mounting Device with Palm

#### Optionals

- **OPT 02S** : Built in Mifare Reader
- **OPT 02P** : Built in EM Proximity Reader
- **OPT 03-25K** : Upgrade to 25,000 Face users
- **OPT 03-50K** : Upgrade to 50,000 Face users
- **OPT 06** : Built in 4G Interface
- **OPT 11** : Battery Back-up (2Hrs) for VF2000
- **OPT 12** : Panel for VF 2000
- **OPT 13** : 7" Turnstile mounting
- **OPT 14** : Temp. Sensor for VF2000

\*Optional