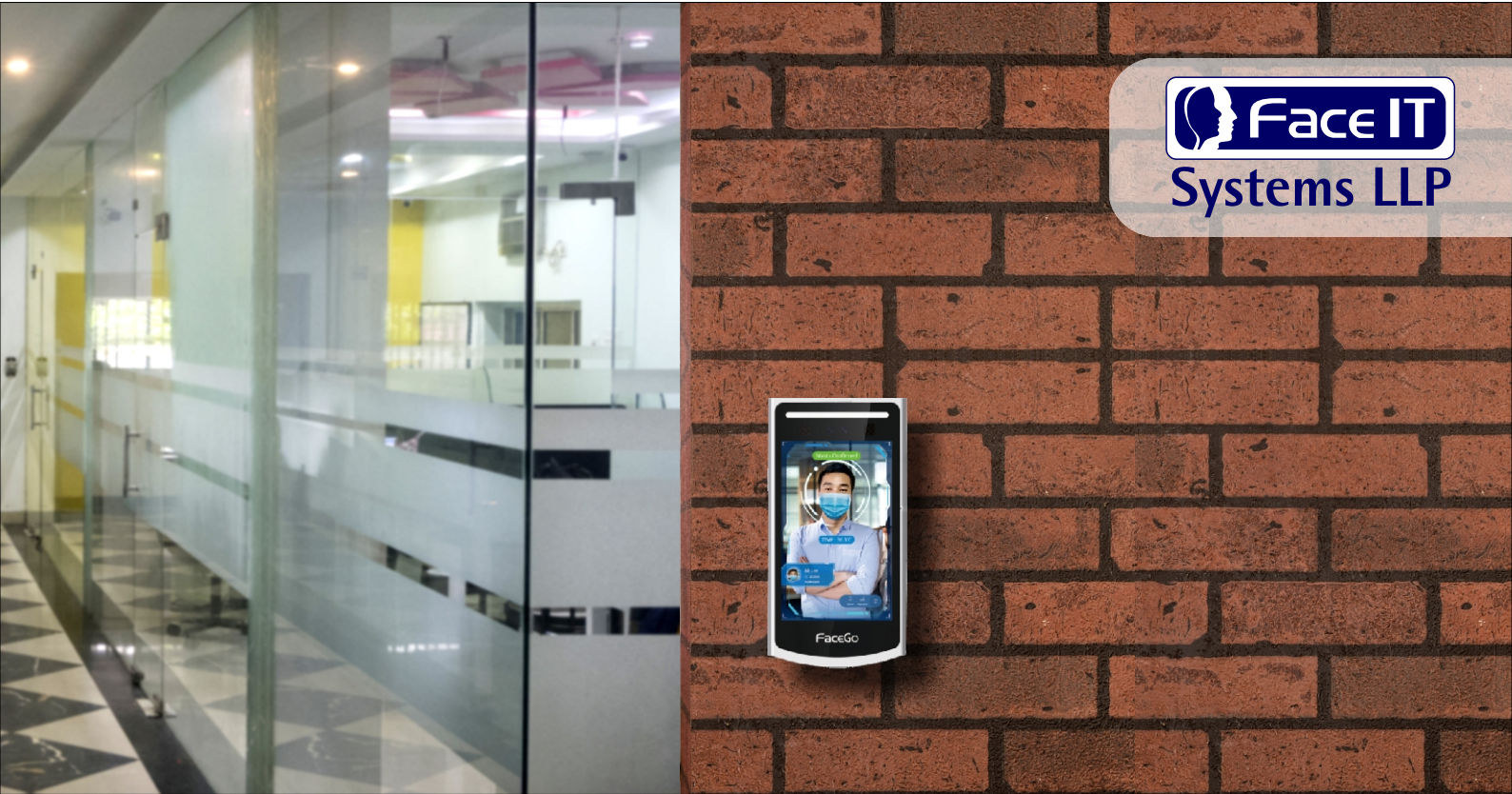


# VF 2000

AI based 7" Industrial grade (IP65 rated) Attendance & Access control Terminal with Mask, Temperature Logging\*



Walk through by authenticating Face with Mask and Body Temperature\*

## Features



10,000 Face users  
(Upgradable 50,000)  
1500 Palm (Opt.)\*



Face Enrollment using  
existing Photo, Device  
& Mobile App



QR code reader  
using Face camera



Cloud Compatible  
with Push Technology



Face Identification  
speed <0.3 sec. with  
spoof detection



Compatible to all  
Access Control Panel



Optional Temperature  
Detection & Logging



Ideal for outdoor Use for  
Access & Attendance

VF 2000 is Classic tall design with large screen 7" size with touch screen. It is weather proof, suitable for Access Control & Time Attendance features with Touchless AI/DL Face recognition technology.

VF 2000 is an elite model with visible light Face recognition Technology. It adopts Artificial Intelligence(AI) & Deep Learning(DL) Algorithm to enable super performance of Face recognition which provides fantastic user experience. Equipped with industrial IPS touch screen and metal casing with IP65 design, allows vast deployment at school, hospital, central building, office and store for Access control & Time Attendance

## VF 2000 : Face Recognition based Attendance System with Mask detection with Body Temperature\*

<b>User Capacity</b>	10,000 Face, upgradable to 50,000 Face, 1500 Palm (Opt.): VF2000P
<b>Speed</b>	Less than 0.3 Second
<b>Accuracy</b>	>99%
<b>Lighting compatible</b>	0.1 Lux ~ 30,000 Lux
<b>Working Distance</b>	0.3 - 2 meter
<b>Record Capacity</b>	200,000
<b>Security Photo</b>	200,000
<b>Authentication</b>	Face, if card reader opted for : Card+Face, Card/Face, ID+Pin
<b>Mask Detection</b>	Yes
<b>Attendance</b>	Interval, Work Status, Work Code
<b>Operating System</b>	Linux 4.9
<b>Processor</b>	Dual-core 1GHZ
<b>Screen</b>	Industry 7 inch IPS Touch Screen, Resolution 1024 X 600 Pixel
<b>Sensor</b>	Dual Camera with 1080P/30fps
<b>Storage</b>	EMMC FLASH 8Gbytes, 16GB TF
<b>Interface</b>	Wifi, LAN port, TCP/IP, USB, RS485, Weigand Output, Relay, Exit Door
<b>Working Environment</b>	For terminal: (-)10°C~(+50°C, RH <95%(non Condensing) Temperature module: 10°C~40°C
<b>Access Control</b>	Compatible with 26/34 bit Access Control
<b>Certification</b>	RoHS, FCC, CE
<b>Application Area</b>	Outdoor & Indoor
<b>Industrial Grade</b>	Full Metal Body & shielded cable for Outdoor Application
<b>IP Rating</b>	IP65
<b>Physical &amp; Electrical</b>	Dimension : 230*25*120 mm, Weight : 0.85 Kg, Power : DC 12V 2A
<b>Card Reader*</b>	EM Proximity / MIFARE Reader to read any sector(Optional)
<b>Temperature Detection*</b>	Distance: 30cm~50cm, Range: 33°C~42°C Accuracy: +/-0.3°C, indoor w/o wind
<b>Built-in 4G Interface*</b>	Optional 4G interface with SIM card slot
<b>Accessories</b>	Wall mounting plate, Turnstile Mounting* (Optional)



\*Optional

\*Specifications are subject to change without notice

### Communication Platform Software & API's

- **Smart Face** : Web Based Communication Server for Face & Finger Terminal, Template & Data Management with Push Technology
- **PM Neo** : API integration project with HRMS/Payroll/ERP software for Employee Master, Templates, Terminal & Transaction data

### T & A Application Software

- **Smart Face Attendance** : Web based Platform Software with Built-in Attendance Management, Leave & OT Module
- **OTG HR** : Cloud based Attendance System(including Mobile App) with Intra-office Task Management Solution
- **TPP New** : Desktop Based communication & MIS Software with Push Technology upto 200 Users
- **Timely.Bio** : A cloud based attendance management application for Startups/MSMEs

### Ordering Information

- **VF 2000** : 7" Wall mounting Device
- **VF 2000B** : 7" Turnstile mounting Device
- **VF 2000T** : 7" Wall mounting Device with Temperature Sensor
- **VF 2000BT** : 7" Turnstile mounting Device with Temperature Sensor
- **OPT 02** : Upgrade to 25,000 Face users
- **OPT 04** : Built in Mifare Reader
- **OPT 06** : Battery Back-up (2Hrs) for VF 2000
- **OPT 07** : Panel for VF 2000

Marketed by  
**FORTUNA**  
IMPEX PVT LTD

☎ : +91 7550 670 670

✉ : [info@fortunaindia.com](mailto:info@fortunaindia.com)  
🌐 : [www.fortunaimpex.com](http://www.fortunaimpex.com)