



# Onyx

Adaptive, economical and feature rich end to end Time Attendance & Access Control Solution for Small Medium Enterprise (SME)



Onyx is stand alone Finger Print Technology based Attendance & Access Control terminal. It enrolls the user fingers, captures & stores the Attendance records and provide the interface to computer /server.

The next generation finger print sensor is faster & highly effective and economic solution definitive & secure processing for Attendance. The data is downloaded in online/offline mode to a PC/Server for Attendance MIS report generation and data for Payroll/HRMS

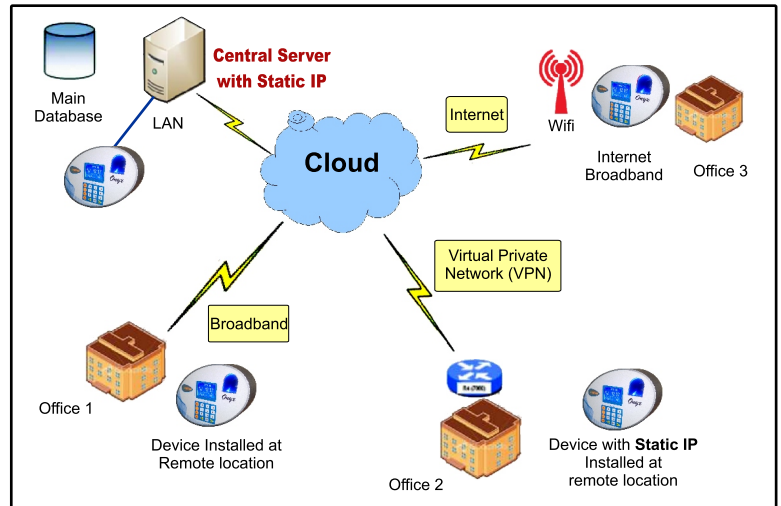
### Technical Specification

- ❖ CPU : High Performance 32 Bit ARM Core CPU
- ❖ Memory : 1,00,000 Transactions
- ❖ User Capacity : 1000 Templates (500 Users with 2 finger each)
- ❖ Identification Time : < 1 Sec.(Typical)
- ❖ Finger Print Sensor : Scratch Resistant Optical Sensor @500DPI
- ❖ Display : 128 X 64 Pixel Graphic Backlit LCD
- ❖ Keyboard : 16 Key sealed Keyboard
- ❖ Finger Rotation : +/- 45 Degree
- ❖ User Friendly : Web Server I/F for managing terminal
- ❖ Communication : 100 MBPS TCP/IP
- ❖ USB Pen Drive Interface
- ❖ Access Control : Wet (12V) / Potential Free Contact O/P
- ❖ UPS with 2 Hours external Battery Backup \*
- ❖ Prox/Mifare Smart Card Reader \*
- ❖ Wifi Interface \*

### A Palette of Features :

- ❖ **Push Data Technology** to Server over LAN or Internet using Broad Band
- ❖ **Configurable Number of Fingers** per user : Default 2 (Upgradable upto 4)
- ❖ **Web Server Interface** for easy & self configuration
- ❖ **Logical, Uncommon design** for high usability & Graphic LCD for better visibility with Name display on finger Punching
- ❖ **Individual Mode of operation**, e.g. Finger only, Card only, Card +Finger etc.
- ❖ **Auto Synching of Finger Template** to Other terminals if required
- ❖ **Choice of Built-in card Readers\*** (Smart Card) for 1:1 matching & "Finger on card" implementation (using Smart Card)

### Connectivity with LAN/Broadband with Static IP



### Physical & Environmental Specs

- ❖ Sleek Oval shape ABS enclosure
- ❖ Size : 176 X 120 mm Oval shape X 42 (D) mm
- ❖ SMPS Power : Input - 90 to 270V AC, Output :12V DC
- ❖ Operating Temperature : 0 to 50 Deg.C
- ❖ Humidity : Upto 90 % RH (Non-condensing)

### Ordering Information:

❖ **Onyx** : Biometric Attendance Terminal

#### Optionals:

- \* OPT 01 : POE option for Ethernet
- \* OPT 02 : Smart Card Reader Option
- \* OPT 03 : Prox Card Reader Option
- \* OPT 04 : UPS & Battery with 2Hrs Backup
- \* OPT 05 : Wifi Option
- ❖ **TPP Neo** : DeskTop based Time Office Application for SME(upto100 Emp.)
- ❖ **DXS** : Windows based Data Push Service for Server
- ❖ **eZeeHR** : Hosted Cloud based Attendance Management System
- ❖ **Just HRMS** : Multi-Location, Web based Time & Terminal Management System
- ❖ **Door Lock** : (a) Drop bolt (b) EM Lock (c) Door Strike
- ❖ **Cable** : (a) Communication (b) Lock (c) ReX Cable
- ❖ **Accessories** : (a) Exit Switch (b) ID Card (c) Exit Card Reader

\* Optional



8, Ho Chi Minh Sarani  
12D, Harrington Mansions, Kolkata - 700 071 (India)

☎ : (91) (33) 2282 2270 Fax : (91) (33) 2282 2267

✉ : info@fortunaindia.com; 🌐 : www.fortunaindia.com